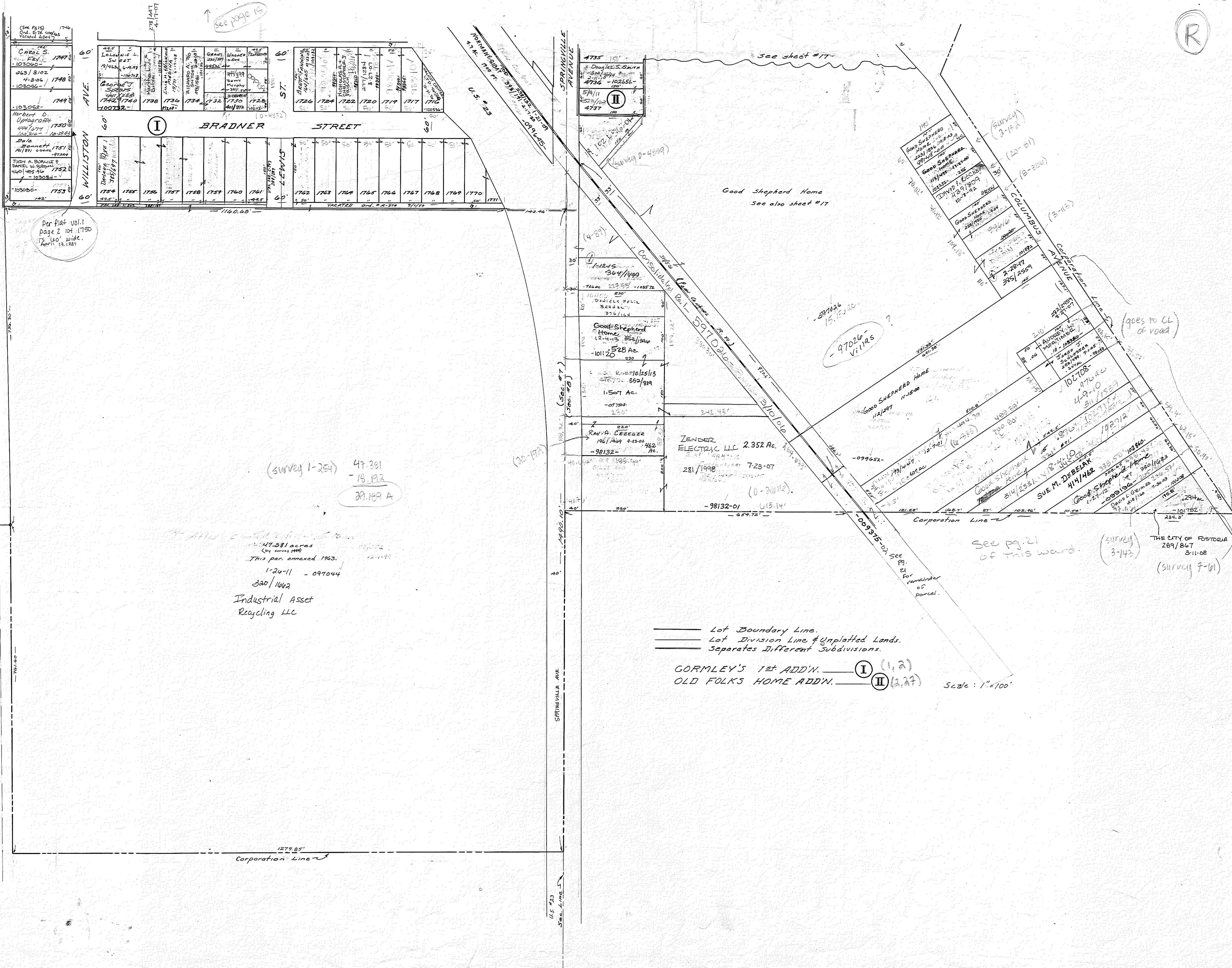




see page 15



Per Plat vol. 1
page 2 lot 1750
is 140' wide.
April 23, 1887

(Survey 1-254) 47.391
- 18.193
29.198 A

47.381 acres
(City survey 1999)
This par. annexed 1963.
1-24-11 - 097044
300/1062
Industrial Asset
Recycling LLC

==== Lot Boundary Line.
==== Lot Division Line & Unplatted Lands.
==== Separates Different Subdivisions.

GORMLEY'S 1st ADD'N. I (1,2)
OLD FOLKS HOME ADD'N. II (3,27)

Scale: 1"=100'

THE CITY OF FOSTORIA
289/867
3-11-08
(Survey 7-6)

See pg. 21
of this ward.

(Survey 3-142)

For remainder
of parcel.

- 97026 -
Villas

Good Shepherd Home
See also sheet #17

See sheet #17

(Survey 3-152)

(20-51)

(B-300)

(B-115)

(goes to cl.
of road)

282/465
4-11-07

10-10-08
4-9-10
31/153

10-10-08
4-9-10

10-10-08
4-9-10

10-10-08
4-9-10

10-10-08
4-9-10

10-10-08
4-9-10

10-10-08
4-9-10

10-10-08
4-9-10

10-10-08
4-9-10

10-10-08
4-9-10

10-10-08
4-9-10

10-10-08
4-9-10

10-10-08
4-9-10

10-10-08
4-9-10

10-10-08
4-9-10

10-10-08
4-9-10